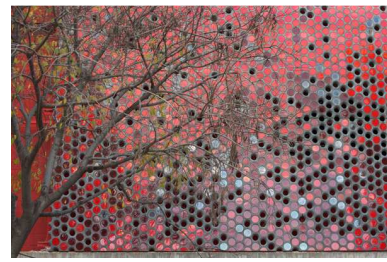
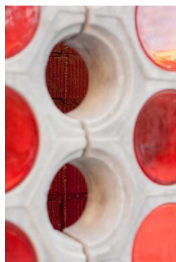




Betoflow® D – CL (characteristics in Table 1) was used by Escofet to produce Ultra High Performance Concrete panels for the renovation and expansion project for Guineueta Market in Barcelona. The panels include translucent, opaque and transparent red polycarbonate discs inserted in the holes which sheds coloured light into the market during opening hours and also outwards at night under the effect of artificial light.

Betoflow® D - CL – Ultrafin calcium carbonate			
Blaine surface area	>1000 m ² /kg	Passing 63 µm	100 %
Methylen blue value	1.1 g/kg	D50	3.9 µm
CaCO ₃ content	97.5 %	Specific gravity	2.7 g/ml

Table 1



Concrete information

Exposure class	XF1	XF1 definition
Strength class (MPa)	C100-120	XF1: Moderate water saturation, without deicing agent.
Water/cement	0.28	
Consistence	Self Compacting Concrete (SCC)	
Cement	CEM I 52.5N	Vertical concrete surfaces exposed to rain and freezing
Betoflow® D dosage	160 kg/m ³	

Table 2



- The precast plant is located in Barcelona (Spain).
- Concrete was produced by: Escofet 1886 S.A
- UHPC technology: Slimconcrete®
- Period : 2012-2013
- Country: Spain (ES)
- Betoflow D –CL is produced in L’Arboc (Omya Clariana)

Web : http://www.escofet.com/upload/descargas/slimconcrete_escofet_baja.pdf

